

# Push-Pull Circular Connectors

PRC05 series / PRC07 series

- PRC05 series are miniature size in comparison with PRC03, PRC04 series, also they are our original Push-Pull Locking connectors for quick and easy maing.
- PRC07 series based on PRC05 series feature high density and miniaturization.

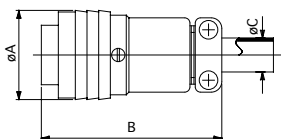
## Specifications

Connections	Push-Pull Lock
Termination	Solder
Temperature and Humidity	-25°C to +85°C 85% Max.
Number of Pins	2, 3, 5, 6, 8, 12
Shell Material / Finish	Brass / Nickel
Contact Material / Finish	Copper Alloy / Gold over Nickel

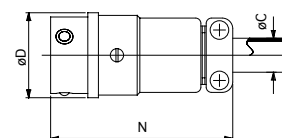
\* See [page 28](#) as for Electrical Specifications.



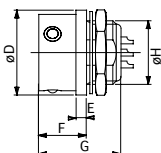
Plug  
PRC05-PSF



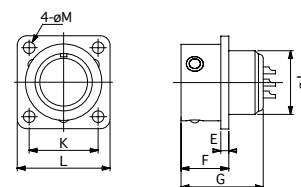
Jack  
PRC05-J5M



Bulkhead Mount Receptacle  
PRC05-R5M



Flange Mount Receptacle  
PRC05-RB5M



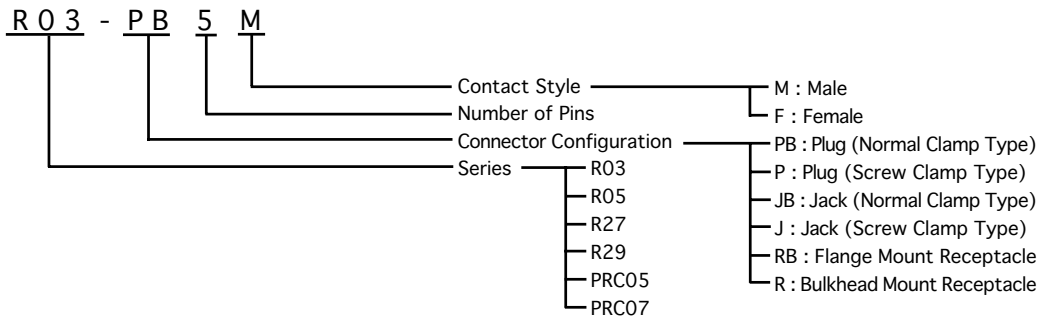
## Configuration

Insert Size	No. of Pins	Dimensions (mm)													
		A	B	C	D	E	F	G	H	J	K	L	M	N	
6	2, 3, 5	13.5	32.0	5.2	13.0	2.0	9.5	18.0	9.0 P=0.5	9.0	11.5	16.0	2.2	32.5	
9	6, 8	16.7	34.0	6.2	16.0	2.0	9.5	18.0	12.0 P=0.8	12.0	13.5	18.0	2.2	34.5	
12	12	21.0	39.0	11.0	20.0	2.0	9.5	18.0	M16 P=1.0	16.0	17.0	22.5	2.8	39.0	

# Miniature Circular Connectors Specifications

R03 series / R05 series / R27 series / R29 series / PRC05 series / PRC07 series

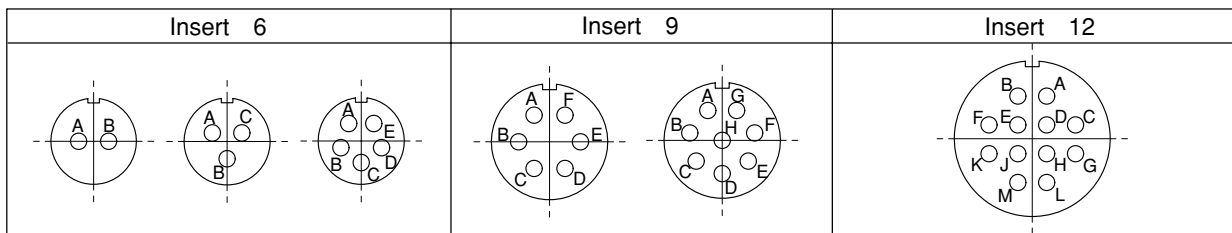
## Part Numbering System



## Electrical Specifications

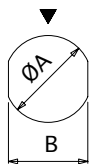
Series	R03, R05, PRC05						R27, R29, PRC07	
Insert Size	6			9		12	6	9
Number of Contacts	2	3	5	6	8	12	8	12
Withstanding Voltage (V RMS)	900	900	500	900	700	900	300	
Voltage Rating (V RMS)	300	300	150	300	200	300	100	
Current Rating (A)	2							
Applicable Wire Size	AWG#24 (0.2mm <sup>2</sup> Max.)						AWG#26 (0.1mm <sup>2</sup> Max.)	
Contact Resistance	8mΩ min.						10mΩ min.	
Insulation Resistance	DC500V 1000MΩ min.						DC100V 1000MΩ min.	

## Insert Arrangement



\* Drawings above are ones viewed from the rear side of pin insulators. (pin contacts)

## Mounting Hole Dimensions

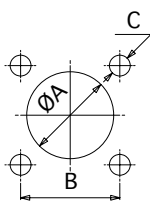


Style 1

### Bulkhead Mount Receptacle

Insert Size	Style	φA	B
6	1	9.2	8.4
9		12.2	11.2
12		16.2	14.7

\* R27, R29 and PRC07 are not available in insert size 12.



Style 2

### Flange Mount Receptacle

Insert Size	Style	φA	B	C
6	2	9.2	10.5	φ2.2
9		12.2	13.0	φ2.2
12		16.2	17.0	φ2.2

\* R27, R29 and PRC07 are not available in insert size 12.